

# Fact Sheet for 2024 Academic Year

## CONTENTS

1. <a href="#">Campus Information</a> .....	1
2. <a href="#">Features of the Meiji University Exchange Student Program</a> .....	2
3. <a href="#">Housing for Exchange Students</a> .....	3
4. <a href="#">Academic Calendar</a> .....	23
5. <a href="#">Scholarship</a> .....	23
6. <a href="#">Class, Japanese-language classes</a> .....	24
7. <a href="#">Exams, Grades and Academic Transcripts</a> .....	25
8. <a href="#">Living Expenses</a> .....	26
9. <a href="#">Curriculum, List of faculty members, Syllabus</a> .....	27
<a href="#">Undergraduate Schools which Offer Classes in Japanese</a> .....	27
<a href="#">Graduate Schools which Offer Classes in Japanese</a> .....	30
<a href="#">Undergraduate Schools which Offer Classes in English</a> .....	33
<a href="#">Graduate Schools which Offer Classes in English</a> .....	35

## 1. Campus Information

Meiji University website	<a href="https://www.meiji.ac.jp/cip/english/">https://www.meiji.ac.jp/cip/english/</a>	
Basic university information	<a href="https://www.meiji.ac.jp/cip/english/about/generalinformation.html">https://www.meiji.ac.jp/cip/english/about/generalinformation.html</a>	
University locations	Surugadai Campus: 1-1 Kanda-Surugadai, Chiyoda-ku, Tokyo	
	Izumi Campus: 1-9-1 Eifuku, Suginami-ku, Tokyo	
	Ikuta Campus: 1-1-1 Higashi-Mita, Tama-ku, Kawasaki-shi, Kanagawa	
	Nakano Campus: 4-21-1 Nakano, Nakano-ku, Tokyo	
Campus information	Surugadai	<a href="https://www.meiji.ac.jp/cip/english/about/campus/su_campus.html">https://www.meiji.ac.jp/cip/english/about/campus/su_campus.html</a>
	Izumi	<a href="https://www.meiji.ac.jp/cip/english/about/campus/iz_campus.html">https://www.meiji.ac.jp/cip/english/about/campus/iz_campus.html</a>
	Ikuta	<a href="https://www.meiji.ac.jp/cip/english/about/campus/ik_campus.html">https://www.meiji.ac.jp/cip/english/about/campus/ik_campus.html</a>
	Nakano	<a href="https://www.meiji.ac.jp/cip/english/about/campus/na_campus.html">https://www.meiji.ac.jp/cip/english/about/campus/na_campus.html</a>

## 2. Features of the Meiji University Exchange Student Program

### (1) Classes

Of the 13,000 class sessions offered at Meiji University, 12,000 are conducted in Japanese. For this reason, those applying for admission to the exchange student program are generally required to have a certain level of Japanese-language proficiency. (However, the English Track of the school of Global Japanese Studies, the English Track of the graduate school of Governance Studies, the International Program in Architecture and Urban Design of the graduate school of Science and Technology and the graduate school of Global Governance or will be taking classes in English in school of Political Science and Economics/ school of Arts and Letters/ the school of Business Administration/ graduate school of Business Administration/ graduate school of Global Business do not require Japanese-language skills.)

### (2) Academic Advisors

Academic advisors provide assistance in creating study plans according to the interview held at Meiji University and consultation for study and student life. Upon their arrival in Japan, exchange students will meet with their academic advisors and create study plans. There may be restrictions on the classes a student may take based on their Japanese proficiency level.

Undergraduate exchange students (other than the school of Commerce, the school of Science and Technology and the school of Agriculture) are assigned the academic advisor according to preferred field of study, preferred classes at Meiji, language proficiency (Japanese or English) and study plan.

### (3) Supervisors, Seminars/Laboratories (“Zemi”)

- ① Supervisors provide instruction directly to students in seminars/laboratories (“zemi”). Seminars/laboratories are comprised of 10–20 students and encourage active discussions with the supervisors. Students participating in these seminars/laboratories are able to interact with other students (excluding students in the English Track of the Graduate School of Governance Studies).
- ② Not all students can participate in the seminars/laboratories. Participation depends on Japanese-language proficiency and the number of seats available. Upon their arrival in Japan, exchange students will meet with their academic advisors and create study plans that include these seminars/laboratories if appropriate.
- ③ Students accepted into the English Track of the Graduate School of Governance Studies will not participate in a seminar. However, they must take a course called “research methods” conducted during their study-abroad term taught by the supervisor the graduate school assigns to them. They must also take at least one class taught by that supervisor.

#### <Notes>

**Applicants to the school of Commerce, the school of Science and Technology, the school of Agriculture and graduate schools are required to choose the preferred supervisors in the online application. Please note you are not necessarily assigned the supervisor which you chose in the online application. A Supervisor will be decided by your undergraduate/graduate school according to the interview held at Meiji University upon your arrival.**

### 3. Housing for Exchange Students

#### [1] Conditions of application for dormitory (IMPORTANT)

In order to apply for the dormitory of Meiji University, students must agree with the conditions listed below.

\*Those who do not agree with any of the conditions are NOT allowed to apply for nor stay in the dormitory of Meiji University.

#### ① Housing arrangement

- (1) Housing arrangement for each student will be decided by Meiji University depending on the state of acceptance of exchange students each semester. For this reason, **only those who are willing to stay in any of the dormitories can apply for a room** (6 dormitories are available as of Spring Semester, 2024 AY).

You may not be assigned as you wish. In this case, you are NOT allowed to refuse, or decline the dormitory after the housing arrangement is decided.

**Students must follow the regulations regarding the smoking and drinking in the dormitory. Furthermore, there are several dormitories which prohibits from access to building and rooms occupied by opposite gender.**

**Students must follow these regulations when staying in dormitory. In case you foresee difficulty, you must not apply for the dormitory and are asked to arrange the accommodation by yourself.**

- (2) Students are NOT allowed to select, refuse, or decline any particular dormitory in their application or after the housing arrangement is decided. (See [3] Overview of the dormitory for exchange students and housing arrangement.)
- (3) **Any changes nor cancellations of the dormitory are not acceptable after submitting the online application.** For this reason, it is strongly recommended that students consider the conditions of each dormitory and their student life before complete the online application.

#### ② Period of stay and rent

- (1) The period of your occupancy of the room is from the first day of the check-in dates (during the orientation weeks) to about 1 week after the last day of the classes and final exams, which will be designated by Meiji University. The rent are calculated based on the occupancy period. Rent will be charged for the whole period.
- (2) Rent is charged to each resident depending on the period of the occupancy. The rent of the first month and the last month of the occupancy is calculated by daily rate of the rent.

Payment is basically made per semester designated by Meiji University academic calendar.

**Residents are required to pay the whole rent for the first one semester (about 5 months) before arrival.** Residents who study at Meiji for 1 year are required to pay the rent for second semester after arrival before the start of the second semester.

- (3) The fees which have once been paid to the university shall not be refundable for whatever reason. Meiji University does not make any settlement nor refund to the residents, regardless of the actual check-in and check-out dates.

**<Estimated total amount of rent>**

(Total amount of rent varies from the check in and out dates designated by Meiji University. Accordingly, final total amount of rent may differ from the amounts shown.)

Dormitory	Monthly Rent (Room rent <u>per month</u> )	<u>Estimated total</u> amount of rent (Duration of Study abroad at Meiji: 1 semester from April)	<u>Estimated total</u> amount of rent (Duration of Study abroad at Meiji: 1 year from April)	<u>Estimated total</u> amount of rent (Duration of Study abroad at Meiji: 1 semester from September)	<u>Estimated total</u> amount of rent (Duration of Study abroad at Meiji: 1 year from September)
Izumi International House	75,000 JPY -	360,000 JPY -	810,000 JPY -	405,000 JPY -	848,000 JPY -
Komae International House	70,000 JPY -	336,000 JPY -	756,000 JPY -	378,000 JPY -	791,000 JPY -
UniLife Sakurajosui Students Hall	88,000 JPY -	442,000 JPY -	950,000 JPY -	475,000 JPY -	994,000 JPY -
Meiji Global Village	85,000 JPY -	408,000 JPY -	918,000 JPY -	459,000 JPY -	961,000 JPY -
Dormy Nishikasai 3 (Male students only)	77,000 JPY -	370,000 JPY-	832,000 JPY-	416,000 JPY-	870,000 JPY-
Tokyo Female Students Dormitory (Female students only)	54,000 JPY -	260,000 JPY-	583,000 JPY-	292,000 JPY-	610,000 JPY-

## **[2] Arrange the accommodation by yourself (Look for housing by yourself)**

You need a guarantor to rent an apartment. For students who cannot find a guarantor in Japan, Meiji University recommends a guarantor company. Exchange students who are enrolled in Meiji University can get special price and service from the guarantor company. For more details, please contact Global Trust Networks Co, Ltd. (GTN). (Mail to: [info@gtn.co.jp](mailto:info@gtn.co.jp))

**Once you select “Look for housing by yourself” in the online application form, Meiji University dormitory cannot be arranged for you. (You can’t apply for Meiji University dormitory after submitting the online application.)** For this reason, it is strongly recommended that students should consider the conditions of each option and their student life before **the online application**.

**Please note that those who stay at long-stay hotels or Airbnb might not register as a resident and join the National Health Insurance. You must be sure the resident of the accommodation can register do them.**

### ① Guarantor Company

Global Trust Networks Co, Ltd.

1-21-11 2nd Floor Oak Ikebukuro Building, Higashiikebukuro, Toshima-ku, 170-0013

TEL: 03-5956-4111 / FAX: 03-5155-4679 / Email: [sales@gtn.co.jp](mailto:sales@gtn.co.jp)

<https://www.gtn.co.jp/en/>

### ② Requirements

#### ■ Exchange students enrolled in Meiji University

\*You are not eligible for this service when you withdraw, expelled, or under disciplinary action from the university.

#### ■ Must obtain a student visa.

#### ■ You must follow the instructions from Meiji University International Student Center.

### ③ How to contract

#### 1) Prepare required documents for the screening

A. Copy of COE (Certificate of Eligibility) or Copy of Resident Card (front and back)

B. Acceptance letter issued by Meiji University

C. Copy of passport (page of your photo)

D. Emergency contact information (One of your parents and one of acquaintances who live in Japan. If you don't have any acquaintances who live in Japan, only contact information for one of your parents is acceptable.)

\*COE (A) and Acceptance letter (B) will be sent to your home university and nominee via e-mail by Meiji University around the middle of February 2024 for the spring 2024, and the middle of July 2024 for the fall 2024.

#### 2) Contact GTN and follow their instructions for the contract. (Mail to: [sales@gtn.co.jp](mailto:sales@gtn.co.jp))

### 【3】 Overview of the dormitory for exchange students and housing arrangement

<NOTES>

Please note that the details of the dormitory are based on the information as of the Spring Semester 2024. The housing arrangement is subject to change in the Fall Semester 2024.

Meiji University arranges 6 dormitories for incoming exchange students to get enrolled in the Spring Semester 2024. Meiji University makes all decisions regarding dormitory and room assignments.

Considering which dormitories each student belongs to and the characteristics of them, Meiji University will decide the housing assignment for each exchange student. (Housing assignment method is subject to change depending on the status of accepting exchange students.)

Applicants for the dormitories of Meiji University must follow any rules of each dormitory set by Meiji University and the management companies.

Residence	Monthly rent	Closest station	Meal plan
(1) Izumi International House	JPY 75,000	Meidaimae Sta.	N/A
(2) Komae International House	JPY 70,000	Komae Sta.	<b>Optional.</b> Fees are <u>NOT included in the monthly rent.</u>
(3) UniLife Sakurajosui Students Hall	JPY 88,000	Sakurajosui Sta.	<b>Mandatory.</b> Fees are <u>NOT included in the monthly rent.</u> It costs <b>JPY 27,500 per month.</b>
(4) Meiji Global Village	JPY 85,000	Meidaimae Sta.	<b>Optional.</b> Fees are <u>NOT included in the monthly rent.</u>
(5) Dormy Nishikasai 3 (Male students only)	JPY 77,000	Nishi-kasai Sta.	<b>Optional.</b> Fees are <u>NOT included in the monthly rent.</u>
(6) Tokyo Female Students Dormitory (Female students only)	JPY 54,000	Nakano Fujimicho Sta.	N/A

#### 【4】 Overview of the dormitory

##### (1) Meiji University Izumi International House;

For all exchange students, owned by Meiji University

Izumi International House is owned by Meiji University and was opened in March 2009. It is a dormitory for incoming exchange students and researchers. (The dorm isn't for regular students.) Izumi International House is close to the Meidaimae station of Keio Line, which gives residents good access to Izumi, Surugadai, and Nakano campuses.

- ① **Address** 2-24-14 Izumi, Suginami-ku, Tokyo 168-0063
- ② **Transportation** Approx. 12 min. on foot from Meidaimae Sta on the Keio Line, Keio Inokashira Line
- ③ **Rooms** 29 rooms (61 rooms in total in the residence)
- ④ **Access to campuses of Meiji University**

Campus	Route	Approx. Duration*	Approx. Fare**
Surugadai	➤ Keio: Meidaimae to Shinjuku	25 min.	JPY 6,060
	➤ JR: Shinjuku to Ochanomizu		
Izumi	➤ On foot	10 min.	N/A
Ikuta	➤ Keio Inokashira: Meidaimae to Shimokitazawa	35 min.	JPY 5,320
	➤ Odakyu: Shimokitazawa to Ikuta		
Nakano	➤ Keio: Meidaimae to Shinjuku	20 min.	JPY 4,980
	➤ JR: Shinjuku to Nakano		

\* Approx. Duration is the time it takes to get from the nearest station of the dormitory to the nearest station of each campus by train, etc.

\*\*Approx. Fare is a commuter pass (for one month) when using the routes listed in the table [Route].

##### ⑤ Facilities

Students' resident area of Meiji University Izumi International House is divided into 9 units (separated by gender), with each unit housing 6–8 exchange students. Each unit has individual dorm rooms and a shared dining area and laundry room. **The kitchen is shared in each unit.**

###### (1) Interior shared facilities

Entrance hall: Mailboxes, vending machines, public telephones, a tea-ceremony room

###### (2) Facilities in each unit

###### (a) Shared facilities

Refrigerator, microwave, toaster, rice cooker, TV, cooking supplies (pot, frying pan, knife, cutting board, etc.); laundry area with coin-operated laundry machine

###### (b) Each room (one room is assigned to each student in the unit) (14.58 m<sup>2</sup>)

A bed, bedding, desk and chair, curtains, air conditioner, wired internet access (**Wi-Fi is NOT available**), and modular bath (bathtub and/or shower, toilet)

###### (c) Remarks

- Various daily necessities (dishes, toilet paper, detergent, etc.) are not provided. Please bring your own when you come to Japan or purchase them after arrival.
- Some dorm rooms may not have a bathtub, but all have a shower and toilet.
- If you plan to use the Internet, please bring your own LAN cable. (**Wireless Internet access, Wi-Fi is NOT available.**)

⑥ **Rent and charges**

- (1) Monthly rent is **JPY 75,000**. (Rent for 2024 Spring Semester. It is subject to change in 2024 Fall Semester.) Even if you leave the dorm for a time during an extended break, you will still be charged a rent for whole months. The rent includes an expense of Internet usage.
- (2) Utility expenses (water, electricity, and gas) are charged at cost according to the facility's prepaid system. (JPY 5000 - JPY 10000 /month)
- (3) Use of a laundry machine costs JPY 200 and drying machine costs JPY 100 per time.

⑦ **Rules of the dormitory**

- (1) Resident managers stay in the dormitory.
- (2) Residents do not have a curfew.
- (3) Smoking is prohibited in the dorm (room, balcony, and common areas). Smoking is allowed only in outside smoking area.**
- (4) Meiji University decides which units and rooms will be used, and residents may not move to a different room or exchange rooms with other students on their own.
- (5) If you are going to stay out overnight, you need to notify the resident manager of your absence in advance.
- (6) Meiji University may ask residents to move to a different room during their period of stay, depending on the status of accepting international students of each semester.
- (7) Students will not be allowed to move out during their occupancy period.
- (8) Visitors are not allowed to stay overnight at the dorm. They can visit the dorm from 8:00AM to 10:00PM.

⑧ **Feature**

- (1) Only for students, professors, and researchers of Meiji University.
- (2) This dorm is suitable for those who would like to share a unit with other students.
- (3) No meal plans.



## (2) Komae International House;

For all exchange students, owned by a private company, Kyoritsu Maintenance CO., LTD.

Komae International House is owned by a private company named Kyoritsu Maintenance CO., LTD, and opened in March 2011. It is a dormitory only for students of Meiji University. It has 145 single rooms in total which are about 141 used for regular students, mainly Japanese, of Meiji University and about 4 for incoming exchange students. Komae International House is conveniently located near Komae station of Odakyu Line, which gives residents good access to Ikuta campus.

- ① **Address** 1-5-1 Motoizumi, Komae, Tokyo 201-0013
- ② **Transportation** Approx. 2min. on foot from Komae Sta. on Odakyu Line
- ③ **Rooms** 3 single rooms (145 rooms in total in the residence)
- ④ **Access to campuses of Meiji University**

Campus	Route	Approx. Duration*	Approx. Fare**
Surugadai	➤ Odakyu: Komae to Shinjuku	40 min.	JPY 7,620
	➤ JR: Shinjuku to Ochanomizu		
Izumi	➤ Odakyu: Komae to Shimokitazawa	25 min.	JPY 4,760
	➤ Keio Inokashira: Shimokitazawa to Meidaimae		
Ikuta	➤ Odakyu: Komae to Ikuta	10 min.	JPY 2,280
Nakano	➤ Odakyu: Komae to Shinjuku	40 min.	JPY 6,540
	➤ JR: Shinjuku to Nakano		

\* Approx. Duration is the time it takes to get from the nearest station of the dormitory to the nearest station of each campus by train, etc.

\*\*Approx. Fare is a commuter pass (for one month) when using the routes listed in the table [Route].

## ⑤ Facilities

Komae International House is an apartment-type dormitory with individual dorm rooms. Most of its floors are divided by gender, while only the first floor is used by both male students and female students. It has a laundry room and dining hall in the common areas. **Each individual dorm room has an IH cooking stove and mini-refrigerator.**

### (1) Common facilities

Entrance hall: Mailboxes, reception area (dorm manager's office), guest room, laundry room, courtyard (smoking area), dining hall (lounge), vending machines

### (2) Private room facilities (17.25 m<sup>2</sup>)

Bed, bedding, desk and chair, curtains, air conditioner, modular bath (bathtub, shower, toilet), wash stand, IH cooking stove, mini-refrigerator, Internet access (Wi-Fi)

### (3) External shared facility

A parking for bicycle

### (4) Remarks

- Various daily necessities (dishes, toilet paper, detergent, etc.) are not provided. Please bring your own when you come to Japan or purchase them after arrival.

## ⑥ Rent and charges

- (1) Monthly rent is **JPY 70,000**. (Rent for 2024 Spring semester. It is subject to change in 2024 Fall Semester.) Even if you leave the dorm for a time during an extended break, you will still be charged a rent for whole month. The rent includes an expense of Internet usage.
- (2) Electricity cost is charged at cost.
- (3) Use of a drying machine costs JPY 100 per 30 minutes.
- (4) Building maintenance fee: JPY 3,000 as one-time fee due upon move-in
- (5) Meal contract is available as follows
  - Monthly contract for breakfast and dinner: JPY 17,600/month
  - Daily contract for breakfast only: JPY 385 per time
  - Daily contract for dinner only: JPY 715 per time

## ⑦ Rules of the dormitory

- (1) A resident manager and housemother serve in Komae International House.
- (2) Residents do not have a curfew.
- (3) Smoking is prohibited in the dorm (room, balcony, and common areas). Smoking is allowed only in outside smoking area.**
- (4) If you are going to spend the night outside of the dorm, you need notify the resident manager in advance.
- (5) Access to floors and rooms occupied by opposite gender is not allowed.
- (6) Visitors are not allowed to access to resident area. Their access is limited to a lounge and communal place only.
- (7) Meiji University decides which units and rooms will be used, and residents may not move to a different room or exchange rooms with other students on their own.
- (8) Meiji University may ask residents to move to a different room during their period of stay, depending on the status of accepting international students of each semester.
- (9) Students will not be allowed to move out during their occupancy period.
- (10) Komae International House is not owned by Meiji University, but by a private company, Kyoritsu Maintenance. Please note that students need to follow the regulations set by Kyoritsu Maintenance CO., LTD.**

## ⑧ Feature

- (1) Only for students of Meiji University (both Japanese and international students).
- (2) Suitable for those who would like to stay in apartment-type residence.
- (3) Suitable for those who would prefer to study or work on their research in a quiet environment, or those who would like to have more private space.
- (4) Dormitory that has meal plans.

## ⑨ Information materials

Komae International House by Kyoritsu Maintenance CO., LTD

URL: <https://meijiglobalvillage.com/en/kih/>

**\*The fees listed on the website are not for exchange students at Meiji University.**

### (3) UniLife Sakurajosui Student Hall

For all exchange students, owned by a private company, J.S.B. Network Inc.

Uni Life Sakurajosui Student Hall, scheduled for completion in February 2024, is a dormitory owned and operated by a private company, J.S.B. Network Inc. There are 121 rooms in total, and Meiji University will provide 19 of them for rental to exchange students of Meiji University. It is located near Sakurajosui and Kamikitazawa Stations on the Keio Line, providing convenient access to Surugadai and Izumi campuses.

- ① **Address** 193-1, Shimotakaido 1-chome, Suginami-ku, Tokyo 168-0073
- ② **Transportation** Approx. 8 min. on foot from Sakurajosui Sta. on the Keio Line  
Approx. 7 min. on foot from Kamikitazawa Sta. on the Keio Line
- ③ **Rooms** 19 rooms (Total number are 121 rooms)
- ④ **Access to campuses of Meiji University**

Campus	Route	Approx. Duration*	Approx. Fare**
Surugadai	➤ Keio: Sakurajosui Sta. → Jinbocho Sta.	30 min.	JPY 6,800
Izumi	➤ Keio: Sakurajosui Sta. → Meidaimae Sta.	2 min.	JPY 1,870
Ikuta	➤ Keio: Sakurajosui Sta. → Meidaimae Sta.	40 min.	JPY 5,320
	➤ Keio Inokashira: Meidaiae Sta. → Shimokitazawa Sta.		
	➤ Odakyu: Shimokitazawa Sta. → Ikuta Sta.		
Nakano	➤ Keio: Sakurajosui Sta. → Shinjuku Sta.	30 min.	JPY 5,210
	➤ JR: Shinjuku Sta. → Nakano Sta.		

\* Approx. Duration is the time it takes to get from the nearest station of the dormitory to the nearest station of each campus by train, etc.

\*\*Approx. Fare is a commuter pass (for one month) when using the routes listed in the table [Route].

### ⑤ Facilities

UniLife Sakurajosui Student Hall is a dormitory with private rooms, shared facilities, and equipment. A table-top induction stove, refrigerator, and microwave oven are installed in each individual room.

The main facilities are as follows.

#### (1) Common Facilities

Self-locking, Security camera, Elevator, Delivery box, Cafeteria

Bicycle parking lot \*Need to make a separate contract for bicycle parking.

Bicycle sticker fee of 1,100 yen (tax included)

#### (2) Private Room Facilities

Room Size (16.2 m<sup>2</sup> ~ 17.9 m<sup>2</sup>):

Separate bathroom, PIN key, Intercom with monitor, Sink, Table-top induction stove,

Living room lighting, Ceiling mounted dehumidifier, Bidet Toilet, Indoor hunger for drying clothes, Sensor-sensing light, Storage, Shoe case, Balcony, Internet, Bed, Refrigerator, Microwave oven, Washing machine, Chair, Desk with storage, TV stand

(3) Remarks

- Various daily necessities (dishes, toilet paper, towels, detergent, etc.) are not provided. Please bring your own when you come to Japan or purchase them after arrival.

⑥ **Rent and charges**

- (1) The monthly rent fee is **JPY 88,000**. (Rent for 2024 Spring semester. It is subject to change in 2024 Fall semester.) Fees will be charged even if you are temporarily absent during a vacation. The fee also includes the Internet usage fee.
- (2) The user pays the actual cost of utilities (electricity, gas, and water) separately.  
**✖The rent doesn't include these kinds of fees.**
- (3) Meals are provided to residents. Rates are as follows.  
Monthly contract for breakfast and dinner: JPY 27,500 /month (tax included)

⑦ **Rules of the dormitory**

- (1) The building manger is always on duty.
- (2) There is no curfew for residents.
- (3) **Smoking is not permitted in the room and on this property.**
- (4) Meiji University will decide which rooms will be used. Residents are not allowed to move or exchange rooms without permission.
- (5) Depending on the situation of the international student, you may move to a different room during your stay.
- (6) In principle, students are not allowed to leave during their study period.
- (7) **Since the dormitory is not owned by Meiji University, you must follow the rules of UniLife Sakurajosui Student Hall of JSB Network, Inc.**

⑧ **Feature**

- (1) Students (Japanese and international) from Meiji University and other universities live in this dorm.
- (2) This dorm is suitable for those who want to interact with a variety of people at the cafeteria while maintaining their own private space.
- (3) Meals are provided. Allergy and vegetarian menus are not available.

⑨ **Other information**

UniLife Sakurajosui Student Hall by JSB Network Inc.

URL: <https://unilife.co.jp/view/12502/> (Japanese only)

**\*The fees listed on the website are not for exchange students at Meiji University.**

#### (4) Meiji Global Village;

**For all exchange students, owned by a private company, Kyoritsu Maintenance Co., Ltd.**

Meiji Global Village is owned by a private company named Kyoritsu Maintenance Co., Ltd. It is a dormitory only for students of Meiji University and opened in March 2019. It has 216 single rooms in total which are about 116 used for regular students of Meiji University and about 100 for incoming exchange students. Meiji Global Village is conveniently located in Izumi campus, which gives residents good access to Izumi, Surugadai, and Nakano campuses.

- ① **Address** 1-11-1 Eihuku, Suginami-ku, Tokyo 168-0064
- ② **Transportation** Approx. 12min. on foot from Meidaimae Sta. on the Keio Line, Keio Inokashira Line
- ③ **Rooms** 56 single rooms (216 rooms in total in the residence)
- ④ **Access to campuses of Meiji University**

Campus	Route	Approx. Duration*	Approx. Fare**
Surugadai	➤ Keio : Meidaimae to Shinjuku	25 min.	JPY 6,060
	➤ JR: Shinjuku to Ochanomizu		
Izumi	➤ On foot	5 min.	N/A
Ikuta	➤ Keio Inokashira : Meidaimae to Shimokitazawa	35 min.	JPY 5,320
	➤ Odakyu: Shimokitazawa to Ikuta		
Nakano	➤ Keio: Meidaimae to Shinjuku	20 min.	JPY 4,980
	➤ JR: Shinjuku to Nakano		

\* Approx. Duration is the time it takes to get from the nearest station of the dormitory to the nearest station of each campus by train, etc.

\*\*Approx. Fare is a commuter pass (for one month) when using the routes listed in the table [Route].

#### ⑤ Facilities

Students' resident area of Meiji Global Village is divided into 36 units (separated by gender), with each unit housing 6 students, both exchange students and regular students. Each unit has individual dorm rooms and a shared dining area and laundry room. **Kitchen is equipped in the common area at each floor and shared.**

##### (1) Interior shared facilities

Entrance hall: Mailboxes, vending machines, play room, study space, resident assistant's room, prayer room, restaurant, living room, communal kitchen, music room, guest room, public bath, infirmary, multipurpose lounge, parking area for bicycles, smoking area

##### (2) Facilities in each unit

###### (a) Shared facilities

Shared shower room, toilet, laundry machine, washstand, small sink\*, shared living room

\*Cooking is prohibited in each unit. (Students are able to cook in a kitchen equipped in the common area at each floor.)

###### (b) Each room (one room is assigned to each student in the unit) (Subject to change)

A bed, bedding, desk and chair, curtains, air conditioner, refrigerator, closet, bookshelf, lighting equipment, internet (Wi-Fi)

(C) Remarks

- Various daily necessities (dishes, toilet paper, towels, detergent, etc.) are not provided. Please bring your own when you come to Japan or purchase them after arrival.

⑥ **Rent and charges**

- (1) Monthly rent is **JPY 85,000**. (Rent for 2024 Spring semester. It is subject to change in 2024 Fall semester.) Even if you leave the dorm for a time during an extended break, you will still be charged a rent for whole months. The rent includes an expense of Utility expenses (water, electricity, and gas) and Internet usage.
- (2) Use of a drying machine costs JPY 100 per 30 minutes.
- (3) Meal contract is available as follows (Cost for 2024 Spring semester. It is subject to change in 2024 Fall semester.)
  - Monthly contract for breakfast and dinner: JPY 17,600/month
  - Daily contract for breakfast only: JPY 385 per time
  - Daily contract for dinner only: JPY 715 per time

⑦ **Rules of the dormitory**

- (1) Resident managers stay in the dormitory.
- (2) Residents do not have a curfew.
- (3) Drinking of alcohol is prohibited in the dorm.**
- (4) Smoking is prohibited in the dorm (room, balcony, and common areas). Smoking is allowed only in outside smoking area.**
- (5) Access to building and rooms occupied by opposite gender is not allowed.
- (6) Visitors whom you notified the resident manager in advance are not allowed to access to resident area (a part of first floor and upper than second floor). Their access is limited to a lounge and communal place on the first floor only.
- (7) Meiji University decides which units and rooms will be used, and residents may not move to a different room or exchange rooms with other students on their own.
- (8) If you are going to stay out overnight, you need to notify the resident manager of your absence in advance.
- (9) Meiji University may ask residents to move to a different room during their period of stay, depending on the status of accepting international students of each semester.
- (10) Students will not be allowed to move out during their occupancy period.
- (11) Meiji Global Village is not owned by Meiji University, but by a private company, Kyoritsu Maintenance. Please note that students need to follow the regulations set by Kyoritsu Maintenance CO., LTD.**

⑧ **Feature**

- (1) Only for students (Japanese and incoming exchange students) of Meiji University.
- (2) Suitable for those who would like to share a unit with other students.
- (3) Dormitory that has meal plans.

⑨ **Information materials**

Meiji Global Village by Kyoritsu Maintenance CO., LTD

English: <https://meijiglobalvillage.com/en/mgv/>

Japanese: <https://meijiglobalvillage.com/mgv/>

**\*The fees listed on the website are not for exchange students at Meiji University.**

## (5) Dormy Nishikasai 3

Available only for men, owned by a private company, Kyoritsu Maintenance Co.

Dormy Nishikasai 3 is a dormitory owned and operated by Kyoritsu Maintenance, a private company. There are 78 rooms in total, of which 9 rooms are provided by Meiji University for rental to exchange students of Meiji University. It is located near Nishi-Kasai Station on the Tokyo Metro Tozai Line, providing convenient access to Surugadai Campus and Nakano Campus.

- ① **Address** 6-3-7 Nishi-Kasai, Edogawa-ku, Tokyo 134-0088,
- ② **Transportation** Approx. 4 minutes on foot from Nishikasai Sta. on the Tokyo Metro Tozai Line
- ③ **Rooms** 9 rooms (Total number are 78 rooms)
- ④ **Access to campuses of Meiji University**

Campus	Route	Approx. Duration*	Approx. Fare**
Surugadai	<ul style="list-style-type: none"><li>➤ Tozai: Nishikasai Sta. → Otemachi Sta. →</li><li>➤ Hanzomon: Otemachi Sta. → <u>Jinbocho Sta.</u></li></ul>	25 min.	JPY 4,480
Izumi	<ul style="list-style-type: none"><li>➤ Tozai: Nishikasai Sta. → Kudanshita Sta. →</li><li>➤ Toei: Kudanshita Sta. → Shinjuku Sta. →</li><li>➤ Keio: Shinjuku Sta. → <u>Meidaimae Sta.</u></li></ul>	45 min.	JPY 9,480
Ikuta	<ul style="list-style-type: none"><li>➤ Tozai: Nishikasai Sta. → Otemachi Sta. →</li><li>➤ Chiyoda: Otemachi Sta. → Yoyogiuehara Sta. →</li><li>➤ Odakyu: Yoyogiuehara Sta. → <u>Ikuta Sta.</u></li></ul>	65 min.	JPY 8,630
Nakano	<ul style="list-style-type: none"><li>➤ Tozai: Nishikasai Sta. → <u>Nakano Sta.</u></li></ul>	40 min.	JPY 4,940

\* Approx. Duration is the time it takes to get from the nearest station of the dormitory to the nearest station of each campus by train, etc.

\*\* Approx. Fare is a commuter pass (for one month) when using the routes listed in the table [Route].

## ⑤ Facilities

Dormy Nishikasai 3 is a dormitory consisting of private rooms and shared facilities and equipment.

The main facilities are as follows

### (1) Common Facilities

Dining room, Large public bath, Shared bathroom, Private shower stall, Wi-Fi, Vacuum cleaner, Iron, Self-locking, Security camera.

### (2) Private Room Facilities

Room Size (11.34 m<sup>2</sup>):

Desk, Chair, Lighting, Bed, Curtains, Air conditioner, Wardrobe (closet), Bookshelf (rack), TV terminal, Bathroom sink

### (3) Remarks

- Various daily necessities (dishes, toilet paper, towels, detergent, etc.) are not provided. Please bring your own when you come to Japan or purchase them after arrival.

## ⑥ Rent and charges

- (1) Rent is **JPY 77,000**, including the internet usage fee. (Rent for 2024 Spring semester. It is subject to change in 2024 Fall semester.) The Rent will be charged even if you are temporarily absent during a vacation.
- (2) Electricity charges are paid separately by the user.
- (3) There is a charge of 100 yen per 30 minutes for the use of the dryer.
- (4) Meals are provided to residents. The fees are as follows  
Monthly contract for breakfast and dinner: JPY 17,600 /month

## ⑦ Rules of the dormitory

- (1) The building manger is always on duty.
- (2) There is no curfew for residents.
- (3) **Smoking is not permitted in the room and on this property.**
- (4) Meiji University will decide which rooms will be used. Residents are not allowed to move or exchange rooms without permission.
- (5) Depending on the situation of the international student, you may move to a different room during your stay.
- (6) In principle, students are not allowed to leave during their study period.
- (7) **Since the dormitory is not owned by Meiji University, you must follow the rules of Dormy Nishi-Kasai 3 of Kyoritsu Maintenance Co.**

## ⑧ Feature

- (1) Students (Japanese and international) from Meiji University and other universities live in this dorm.
- (2) This dorm is suitable for those who want to interact with a variety of people while maintaining their own private space.
- (3) Meals are provided. Allergy and vegetarian menus are not available.
- (4) The dormitory is for men only.

## ⑨ Other information

Dormy Nishikasai 3 By Kyoritsu Maintenance Co., Ltd.

URL: <https://dormy-ac.com/placehall/shutoken/ec/13251/> (Japanese only)

**\*The fees listed on the website are not for exchange students at Meiji University.**



## (6) Tokyo Female Students Dormitory;

Available only for women, owned by a private company, Fujiland CO., LTD.

Tokyo Female Students Dormitory (main building) opened in April 2014. A private company, Fujiland CO., LTD, owns the property with 230 single rooms for students of its neighborhood schools. The dormitory has the best access to Nakano campus.

- ① **Address** 1-9-19, Wada, Suginami, Tokyo 166-0012
- ② **Transportation** Approx. 6 min. on foot from Nakano Fujimicho Sta. on Tokyo Metro Marunouchi Line
- ③ **Rooms** 33 rooms (Total number are 230 rooms)
- ④ **Access to campuses of Meiji University**

Campus	Route	Approx. Duration*	Approx. Fare**
Surugadai	➤ Marunouchi: Nakano Fujimicho to Shinjuku	30 min.	JPY 7,520
	➤ JR: Shinjuku to Ochanomizu		
Izumi	➤ Marunouchi: Nakano Fujimicho to Shinjuku	30 min.	JPY 5,540
	➤ Keio: Shinjuku to Meidaimae		
Ikuta	➤ Marunouchi: Nakano Fujimicho to Shinjuku	45 min.	JPY 7,600
	➤ Odakyu: Shinjuku to Ikuta		
Nakano	➤ Marunouchi: Nakano Fujimicho to Shinjuku	25 min.	JPY 6,440
	➤ JR: Shinjuku to Nakano		
	➤ Bus: The nearest stop to Nakano station	20 min.	JPY 7,710

\* Approx. Duration is the time it takes to get from the nearest station of the dormitory to the nearest station of each campus by train, etc.

\*\*Approx. Fare is a commuter pass (for one month) when using the routes listed in the table [Route].

## ⑤ Facilities

Most of the rooms in Tokyo Female Students Dormitory are unit-type rooms. Each unit is shared by 6 students, with individual bedrooms and a dining space named "Share Dining Room." **Kitchen is shared in each unit.**

### (1) Common facility

Lobby, lounge, shared shower room, laundry machine, shared toilet room, training room, common kitchen.

### (2) Facility in rooms and Shared Dining Room

#### (a) Rooms(7.4~10.6 m<sup>2</sup>) (for all rooms)

Bed, bedding, desk and chair, curtains, air conditioner, wired Internet access

#### (b) Shared Dining Room (for a 6-room-unit)

IH cooking stove, refrigerator, microwave, rice cooker, dining table and chairs, air conditioner, lighting equipment, TV, Wi-Fi

### (3) Remarks

- Various daily necessities (dishes, toilet paper, towels, detergent, etc.) are not provided. Please bring your own when you come to Japan or purchase them after arrival.
- If you plan to use the Internet in your room, please bring your own LAN cable. (Wireless Internet access is not available.)

### ⑥ Rent and charges

- (1) Monthly rent is **JPY54,000**. (Rent for 2024 Spring semester. It is subject to change in 2024 Fall semester.) Even if you leave the dorm for a time during an extended break, you will still be charged a rent for whole month. The rent includes an expense of Internet usage.
- (2) Utility expenses (water, electricity, and gas) are included in rent.
- (3) Use of a laundry machine costs JPY 200, drying machine costs JPY 100 per time

### ⑦ Rules of the dormitory

- (1) Resident managers serve in the dormitory.
- (2) **Residents have a curfew.**  
The curfew is 0:00AM. The dormitory is open from 6:00AM to 0:00AM.
- (3) **Drinking of alcohol is prohibited in the dorm.**
- (4) **Smoking is prohibited in the dorm (room, balcony and common areas). Smoking area is not offered.**
- (5) Access of visitors is limited to lobby and lounge on the 1<sup>st</sup> floor. Male visitors are not allowed to enter the dormitory except for parents.
- (6) Meiji University decides which units and rooms will be used, and residents may not move to a different room or exchange rooms with other students on their own.
- (7) Meiji University may ask residents to move to a different room during their period of stay, depending on the status of accepting international students of each semester.
- (8) Students will not be allowed to move out during their occupancy period.
- (9) Tokyo Female Students Dormitory is not owned by Meiji University, but by a private company, Fujiland CO., LTD. **Please note that students need to follow the regulations set by Fujiland CO., LTD.**

### ⑧ Feature

- (1) For students both of Meiji University and of other schools (both Japanese and international students).
- (2) Suitable for those who would like to share a unit with other students.
- (3) No meal plan.
- (4) Female students only.

### ⑨ Information materials

Tokyo Female Students Dormitory by Fujiland CO., LTD

<https://joshikaikan.jp/facility/honkan/> (Japanese only)

<http://www.panorama-fukuoka.net/naviplus/rme/rme0253/index.html>

**\*The fees listed on the website are not for exchange students at Meiji University.**

## Photos of the dormitories 施設の写真

※写真はあくまでも一例です。／The facility conditions are subject to change.

### 1. Izumi International House / 和泉インターナショナルハウス

Exterior of the building / 外観



Entrance / 入口



Shared dining room in a unit / ユニット内ダイニング Single room / 居室



### 2. Komae International House / 狛江インターナショナルハウス

Exterior of the building / 外観



Common dining hall / 食堂



Single room / 居室



### 3. UniLife Sakurajosui Student Hall / UniLife 桜上水学生会館

※This dormitory is scheduled to be completed in February 2024, and the images below are subject to change./

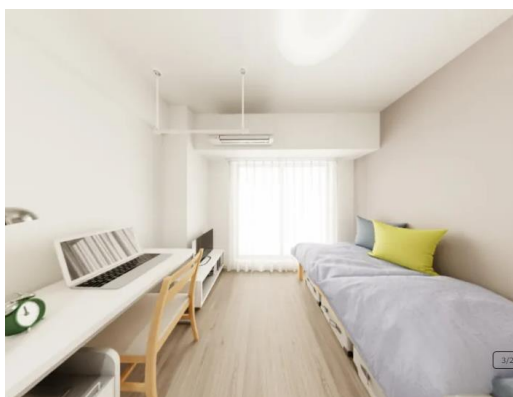
Exterior of the building / 外観



Common dining hall / 食堂

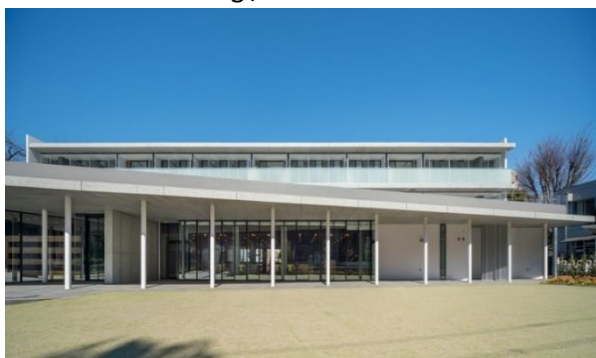


Single room / 居室

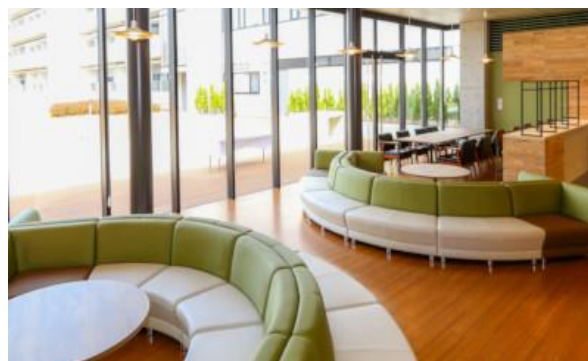
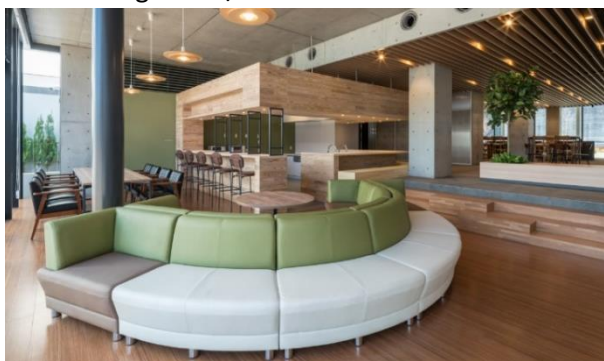


### 4. Meiji Global Village / 明治大学グローバル・ヴィレッジ

Exterior of the building / 外観



Common living room / 共有リビング



Shared kitchen / 共有キッチン



Common dining hall / 食堂



Shared Living / 共有リビング



Single room / 居室



## 5. Dormy Nishi-Kasai 3 / ドーミー西葛西 3

Single Room / 居室



Common dining hall / 食堂



Lounge / ラウンジ



## 6. Tokyo Female Students Dormitory / 東京女子学生会館

Exterior of the building / 外観



Lounge / ラウンジ



Shared dining room / 共有ダイニングルーム



Single room / 居室



## 4. Academic Calendar The academic calendar is subject to change.

Event	Date
Exchange students arrive in Japan and enter a dorm for April enrollment	Week of Mar. 18, 2024
Orientation for Exchange students	Late Mar. 2024
Spring semester begins	Apr. 1, 2024
Spring semester exams	Jul.22 to Jul.30, 2024
Spring semester ends	Jul.31, 2024
Summer break	Aug. 1 through Sep. 19, 2024
Exchange students arrive in Japan and enter a dorm for September enrollment	Week of Sep. 2, 2024
Orientation for Exchange students	Early Sep. 2024
Fall semester begins	Sep. 20, 2024
Winter break	Dec. 25, 2024 to Jan.7, 2025
Fall semester exams	Jan. 25 to Feb. 3, 2025
Fall semester ends	Feb. 3, 2025
Spring break	Feb. 4 through Mar. 31, 2025
Spring semester,2024 begins	Apr. 1, 2025

## 5. Scholarship

The details of the Japan Association Student Service Organization (JASSO) Short Term Study Scholarship for 2024 have not yet been announced. Meiji University will inform the Exchange Program Coordinator **only if adopted**. Please note that NOT all applicants can receive this scholarship and is highly competitive. Meiji University does not offer any other scholarship for exchange students to study at Meiji University other than the JASSO Short Term Study Scholarship.





## 6. Class, Japanese-language classes

### (1) Class

There may be restrictions on the classes a student may take based on their Japanese proficiency level. Students having skills equivalent to the N1 level of the Japanese Language Proficiency Test can take regular classes in their major. Students having the skills equivalent to the N2 level or lower may have to take Japanese-language classes.

### (2) Japanese-language classes for undergraduate and graduate exchange students (excluding students in the school of Global Japanese Studies).

Japanese-language class level is decided according to the placement test held at Meiji University and is not ascertained before arrival. Japanese-language class varies according to Japanese language proficiency.

<p>Introductory, beginners and students with skills equivalent to level N5-N2 of JLPT (the Japanese Language Proficiency Test)</p>	<p>Japanese 1-8 are offered by Japanese Language Programs for International Students.</p> <p> <a href="#">Course outlines</a></p> <p> <a href="#">Syllabus</a></p>
<p>Students with skills equivalent to level N1 of JLPT</p>	<p>Japanese (Advanced) is offered by Japanese Language Programs for International Students. Also, Japanese language classes and Japanese Culture &amp; Society offered by each undergraduate school are available.</p> <p> <a href="#">Course outlines</a></p> <p> <a href="#">Syllabus</a></p>

\*Credits are not offered for graduate exchange students who have completed the Japanese language classes. The certificates of completion is issued to the students who have successfully completed the class. Japanese language classes and Japanese Culture & Society offered by each undergraduate school are not available.

\* Students in the school of Global Japanese Studies are able to take Japanese language classes offered by the school of Global Japanese Studies. Japanese language classes listed above are not available. Please refer to below (3).

\* Course availability is subject to change.

### (3) Japanese-language classes for students in the school of Global Japanese Studies

Students in the School of Global Japanese Studies (SGJS) can register Japanese classes offered by SGJS at Nakano Campus. SGJS students cannot take Japanese classes in the Japanese Language Program.

The class level of Japanese language courses will be decided according to the Japanese Language Placement Test. SGJS will conduct the test after students arrive in Japan, and the course level will not be confirmed until after this test. The Japanese language class a student can take depends on their Japanese proficiency level evaluation.

For further information on Japanese language classes, please see p.29, "For SGJS students (except for English track)." If you are applying to the English track, please refer to p.35.



Introductory, beginners and students with Japanese proficiency equivalent to JLPT N5-N2 level	Students in this range will be able to register “Introductory Japanese” to “Pre-advanced Japanese” courses offered by SGJS.
Students who passed JLPT N1 level	Students who passed JLPT N1 can register “Advance Japanese” for International students offered by SGJS. These students can also register “Japanese Expression”, designed to enhance their Japanese quality. Please note students are required to submit a copy of their JLPT N1 level certificate.

## 7. Exams, Grades and Academic Transcripts

### (1) Exams

As a rule, first-semester exams are held in late July while second-semester exams are held in late January. Grades are generally announced every semester. There are five possible grades: S (90 points or higher), A (80 to 89 points), B (70 to 79 points), C (60 to 69 points), F (59 points or lower: Fail). A grade of C or better is required to earn credits from a course.

Note: Methods for evaluating student grades differ by school/graduate school.

### (2) Academic Transcripts

After you complete your term of study, one (1) copy of your transcript in English will be sent to your home university.

Study-Abroad Term Ends	Transcript Issuance Period	Notes
July 2024	<b><u>Mid-October 2024 or later</u></b>	The timing of transcript issuance is subject to change without notice due to reasons such as grade processing.
February 2024	<b><u>Late-April 2025 or later</u></b>	

**\*In principle, our office cannot send the official transcripts before the transcript issuance period.**

## 8. Living Expenses

### (1) Living Expenses in Tokyo

Tokyo is known around the world as being one of the most expensive places to live. The average monthly expenses of an exchange student are listed below. Do your own research, and be sure you have the funds necessary to cover your expenses.

Rent (Ex: Izumi International House)	¥75,000 or more
Transportation	About ¥10,000-¥20,000
Meals	About ¥30,000 or more
Utilities (electricity, gas, water)	About ¥10,000
Phone	About ¥6,000
Total	About ¥131,000 or more

Notes:

- According to the Japan Student Services Organization, monthly living expenses in Tokyo are generally estimated to be about ¥150,000.
- If you are going to be moving into a new place, keep in mind that you will also have to buy new furnishings and other supplies. You will also have to pay rent and a deposit, and in most cases, other fees such as key money (remuneration paid to a landlord) and agency fees are also required.

### (2) Costs during stay in Japan

You should be prepared to pay the following costs during stay in Japan:

Student health insurance <b>Mandatory for all exchange students</b>	¥3,000 (one-time payment upon arrival)
National Health Insurance <b>Mandatory for all exchange students</b>	About ¥15,000/year
Daily necessities	About ¥30,000
Books (textbooks)	About ¥5,000

## 9. Curriculum, List of faculty members, Syllabus

### Undergraduate Schools which Offer Classes in Japanese

School of Global Japanese Studies (except for English track)		location	Nakano Campus
URL	<a href="https://www.meiji.ac.jp/cip/english/undergraduate/nippon/index.html">https://www.meiji.ac.jp/cip/english/undergraduate/nippon/index.html</a>		
Curriculum	<a href="https://www.meiji.ac.jp/cip/english/undergraduate/nippon/Japanesetrack/chart.html">https://www.meiji.ac.jp/cip/english/undergraduate/nippon/Japanesetrack/chart.html</a> <b>&lt;Notes&gt;</b> <b>●The subjects marked with "○" in the curriculum chart are required courses for regular students of Meiji University. Exchange students cannot take required courses for regular students except Japanese-language courses.</b> <b>●The School of Global Japanese Studies (SGJS) only offers Japanese-language classes for English Track Students and Exchange students in the SGJS. The class level is decided according to the placement test held by SGJS and cannot be decided before arrival.</b> < Intermediate Level (equivalent to JLPT N3 level)> Intermediate Japanese (General), Intermediate Japanese (Vocabulary & Kanji) < Upper-intermediate Level (equivalent to first half of JLPT N2 level)> Upper-intermediate Japanese (General), Upper-intermediate Japanese (Vocabulary & Kanji), JLPT Preparation (Intermediate) < Pre-advanced Japanese Level (equivalent to JLPT N2 level)> Pre-advanced Japanese (General), Pre-advanced Japanese (Vocabulary & Kanji) JLPT Preparation (Advanced) < Advanced Level (JLPT N1 level)> Advanced Japanese (Reading) I / II , Advanced Japanese (Listening) I / II , Advanced Japanese (Writing) I / II , Advanced Japanese (Speaking) I / II < Upper-advanced Level (JLPT N1 level)> Japanese Expression (Writing), Japanese Expression (Speaking). *Japanese Language Programs for International Students in Surugadai campus are not available for students in the School of Global Japanese Studies.		
List of faculty members	<a href="https://www.meiji.ac.jp/cip/english/undergraduate/nippon/faculty.html">https://www.meiji.ac.jp/cip/english/undergraduate/nippon/faculty.html</a>		
Syllabus	<a href="https://www.meiji.ac.jp/nippon/office-info/6t5h7p00000e66ny.html">https://www.meiji.ac.jp/nippon/office-info/6t5h7p00000e66ny.html</a>		

<b>School of Law</b>		locations	Surugadai Campus and Izumi Campus
URL	<a href="https://www.meiji.ac.jp/hogaku/index.html">https://www.meiji.ac.jp/hogaku/index.html</a>		
Curriculum	<a href="https://www.meiji.ac.jp/hogaku/curriculum/index.html">https://www.meiji.ac.jp/hogaku/curriculum/index.html</a>		
List of faculty members	<a href="https://www.meiji.ac.jp/hogaku/teacher/index.html">https://www.meiji.ac.jp/hogaku/teacher/index.html</a>		
Syllabus	<a href="https://www.meiji.ac.jp/hogaku/office_info/6t5h7p00000ejag1.html">https://www.meiji.ac.jp/hogaku/office_info/6t5h7p00000ejag1.html</a>		

<b>School of Commerce</b>		locations	Surugadai Campus and Izumi Campus
URL	<a href="https://www.meiji.ac.jp/shogaku/index.html">https://www.meiji.ac.jp/shogaku/index.html</a>		
Curriculum	<a href="https://www.meiji.ac.jp/shogaku/outline/curriculum.html">https://www.meiji.ac.jp/shogaku/outline/curriculum.html</a>		
List of faculty members	<a href="https://www.meiji.ac.jp/shogaku/teacher/index.html">https://www.meiji.ac.jp/shogaku/teacher/index.html</a>		
Syllabus	<a href="https://www.meiji.ac.jp/shogaku/6t5h7p00000h7gec.html">https://www.meiji.ac.jp/shogaku/6t5h7p00000h7gec.html</a>		

<b>School of Political Science and Economics</b>		locations	Surugadai Campus and Izumi Campus
URL	<a href="https://www.meiji.ac.jp/seikei/index.html">https://www.meiji.ac.jp/seikei/index.html</a>		
Curriculum	<a href="https://www.meiji.ac.jp/seikei/outline/curriculum-zu.html">https://www.meiji.ac.jp/seikei/outline/curriculum-zu.html</a>		
List of faculty members	<a href="https://www.meiji.ac.jp/seikei/faculty/01/index.html">https://www.meiji.ac.jp/seikei/faculty/01/index.html</a>		
Syllabus	<a href="https://www.meiji.ac.jp/seikei/student/syllabus.html">https://www.meiji.ac.jp/seikei/student/syllabus.html</a>		

<b>School of Arts and Letters</b>		locations	Surugadai Campus and Izumi Campus
URL	<a href="https://www.meiji.ac.jp/bungaku/index.html">https://www.meiji.ac.jp/bungaku/index.html</a>		
Curriculum	<a href="https://www.meiji.ac.jp/bungaku/tokusyoku/curriculum.html">https://www.meiji.ac.jp/bungaku/tokusyoku/curriculum.html</a> For details, please refer to the website for each course.		
List of faculty members	<a href="https://www.meiji.ac.jp/bungaku/teachingstaff/index.html">https://www.meiji.ac.jp/bungaku/teachingstaff/index.html</a>		
Syllabus	<a href="https://www.meiji.ac.jp/bungaku/jikanwari.html">https://www.meiji.ac.jp/bungaku/jikanwari.html</a>		

<b>School of Science and Technology</b>		locations	Ikuta Campus
URL	<a href="https://www.meiji.ac.jp/sst/index.html">https://www.meiji.ac.jp/sst/index.html</a>		
Curriculum	<a href="https://www.meiji.ac.jp/sst/curriculum/kamoku.html">https://www.meiji.ac.jp/sst/curriculum/kamoku.html</a> For details, please refer to the website for each course.		
List of faculty members	<a href="https://www.meiji.ac.jp/sst/teacherlist/index.html">https://www.meiji.ac.jp/sst/teacherlist/index.html</a>		
Syllabus	<a href="https://www.meiji.ac.jp/sst/zimushitsu/syllabus.html">https://www.meiji.ac.jp/sst/zimushitsu/syllabus.html</a>		

<b>School of Agriculture</b>		location	Ikuta Campus
URL	<a href="https://www.meiji.ac.jp/agri/index.html">https://www.meiji.ac.jp/agri/index.html</a>		
Curriculum	<a href="https://www.meiji.ac.jp/agri/outline/curriculum.html">https://www.meiji.ac.jp/agri/outline/curriculum.html</a> For details, please refer to the website for each course.		
List of faculty members	<a href="https://www.meiji.ac.jp/agri/laboratory/index.html">https://www.meiji.ac.jp/agri/laboratory/index.html</a>		
Syllabus	<a href="https://www.meiji.ac.jp/agri/student/6t5h7p00000gpn31.html">https://www.meiji.ac.jp/agri/student/6t5h7p00000gpn31.html</a>		
<b>School of Business Administration</b>		locations	Surugadai Campus and Izumi Campus
URL	<a href="https://www.meiji.ac.jp/keiei/index.html">https://www.meiji.ac.jp/keiei/index.html</a>		
Curriculum	<a href="https://www.meiji.ac.jp/keiei/curriculum/subject.html">https://www.meiji.ac.jp/keiei/curriculum/subject.html</a>		
List of faculty members	<a href="https://www.meiji.ac.jp/keiei/faculty/01/index.html">https://www.meiji.ac.jp/keiei/faculty/01/index.html</a> <a href="https://www.meiji.ac.jp/keiei/faculty/02/index.html">https://www.meiji.ac.jp/keiei/faculty/02/index.html</a> <a href="https://www.meiji.ac.jp/keiei/faculty/03/index.html">https://www.meiji.ac.jp/keiei/faculty/03/index.html</a> <a href="https://www.meiji.ac.jp/keiei/faculty/04/index.html">https://www.meiji.ac.jp/keiei/faculty/04/index.html</a>		
Syllabus	<a href="https://www.meiji.ac.jp/keiei/curriculum/subject.html">https://www.meiji.ac.jp/keiei/curriculum/subject.html</a>		

<b>School of Information and Communication</b>		locations	Surugadai Campus and Izumi Campus
URL	<a href="https://www.meiji.ac.jp/infocom/index.html">https://www.meiji.ac.jp/infocom/index.html</a>		
Curriculum	<a href="https://www.meiji.ac.jp/infocom/curriculum/syllabus2017.html">https://www.meiji.ac.jp/infocom/curriculum/syllabus2017.html</a>		
List of faculty members	<a href="https://www.meiji.ac.jp/infocom/teacher/index.html">https://www.meiji.ac.jp/infocom/teacher/index.html</a>		
Syllabus	<a href="https://www.meiji.ac.jp/infocom/office/6t5h7p00000kqq6g.html">https://www.meiji.ac.jp/infocom/office/6t5h7p00000kqq6g.html</a>		

<b>School of Interdisciplinary Mathematical Sciences</b>		location	Nakano Campus
URL	<a href="https://www.meiji.ac.jp/ims/">https://www.meiji.ac.jp/ims/</a>		
Curriculum	<a href="https://www.meiji.ac.jp/ims/subject/msbma/curriculum.html">https://www.meiji.ac.jp/ims/subject/msbma/curriculum.html</a> <a href="https://www.meiji.ac.jp/ims/subject/fms/curriculum.html">https://www.meiji.ac.jp/ims/subject/fms/curriculum.html</a> <a href="https://www.meiji.ac.jp/ims/subject/nd/curriculum.html">https://www.meiji.ac.jp/ims/subject/nd/curriculum.html</a>		
List of faculty members	<a href="https://www.meiji.ac.jp/ims/faculty/msbma.html">https://www.meiji.ac.jp/ims/faculty/msbma.html</a> <a href="https://www.meiji.ac.jp/ims/faculty/fms.html">https://www.meiji.ac.jp/ims/faculty/fms.html</a> <a href="https://www.meiji.ac.jp/ims/faculty/nd.html">https://www.meiji.ac.jp/ims/faculty/nd.html</a>		
Syllabus	<a href="https://www.meiji.ac.jp/ims/syllabus/index.html">https://www.meiji.ac.jp/ims/syllabus/index.html</a>		

## Graduate Schools which Offer Classes in Japanese

<b>Graduate School of Law</b>		location	Surugadai Campus
URL	<a href="https://www.meiji.ac.jp/dai_in/law/index.html">https://www.meiji.ac.jp/dai_in/law/index.html</a>		
Curriculum	<a href="https://www.meiji.ac.jp/dai_in/law/syllabus.html">https://www.meiji.ac.jp/dai_in/law/syllabus.html</a>		
List of faculty members	<a href="https://www.meiji.ac.jp/dai_in/law/faculty/01/index.html">https://www.meiji.ac.jp/dai_in/law/faculty/01/index.html</a> <a href="https://www.meiji.ac.jp/dai_in/law/faculty/02/index.html">https://www.meiji.ac.jp/dai_in/law/faculty/02/index.html</a>		
Syllabus	<a href="https://www.meiji.ac.jp/dai_in/law/syllabus.html">https://www.meiji.ac.jp/dai_in/law/syllabus.html</a>		

<b>Graduate School of Commerce</b>		location	Surugadai Campus
URL	<a href="https://www.meiji.ac.jp/dai_in/commerce/index.html">https://www.meiji.ac.jp/dai_in/commerce/index.html</a>		
Curriculum	<a href="https://www.meiji.ac.jp/dai_in/commerce/curriculum/curriculum-commerce.html">https://www.meiji.ac.jp/dai_in/commerce/curriculum/curriculum-commerce.html</a>		
List of faculty members	<a href="https://www.meiji.ac.jp/dai_in/commerce/index.html">https://www.meiji.ac.jp/dai_in/commerce/index.html</a>		
Syllabus	<a href="https://www.meiji.ac.jp/dai_in/commerce/syllabus.html">https://www.meiji.ac.jp/dai_in/commerce/syllabus.html</a> <a href="https://oh-o2.meiji.ac.jp/portal/index">https://oh-o2.meiji.ac.jp/portal/index</a> Language : English, Click "Guest Login" and "Search"		

<b>Graduate School of Political Science and Economics</b>		location	Surugadai Campus
URL	<a href="https://www.meiji.ac.jp/dai_in/political_science-economics/index.html">https://www.meiji.ac.jp/dai_in/political_science-economics/index.html</a>		
Curriculum	<a href="https://www.meiji.ac.jp/dai_in/political_science-economics/curriculum/curriculum-political-science-and-economics.html">https://www.meiji.ac.jp/dai_in/political_science-economics/curriculum/curriculum-political-science-and-economics.html</a>		
List of faculty members	<a href="https://www.meiji.ac.jp/dai_in/political_science-economics/faculty/01/index.html">https://www.meiji.ac.jp/dai_in/political_science-economics/faculty/01/index.html</a> <a href="https://www.meiji.ac.jp/dai_in/political_science-economics/faculty/02/index.html">https://www.meiji.ac.jp/dai_in/political_science-economics/faculty/02/index.html</a>		
Syllabus	<a href="https://www.meiji.ac.jp/dai_in/political_science-economics/syllabus.html">https://www.meiji.ac.jp/dai_in/political_science-economics/syllabus.html</a> <a href="https://oh-o2.meiji.ac.jp/portal/index">https://oh-o2.meiji.ac.jp/portal/index</a> Language : English, Click "Guest Login" and "Search"		

<b>Graduate School of Business Administration</b>		location	Surugadai Campus
URL	<a href="https://www.meiji.ac.jp/dai_in/business_administration/index.html">https://www.meiji.ac.jp/dai_in/business_administration/index.html</a>		
Curriculum	<a href="https://www.meiji.ac.jp/dai_in/business_administration/curriculum/curriculum-business-administration.html">https://www.meiji.ac.jp/dai_in/business_administration/curriculum/curriculum-business-administration.html</a>		
List of faculty members	<a href="https://www.meiji.ac.jp/dai_in/business_administration/index.html">https://www.meiji.ac.jp/dai_in/business_administration/index.html</a>		
Syllabus	<a href="https://www.meiji.ac.jp/dai_in/business_administration/syllabus.html">https://www.meiji.ac.jp/dai_in/business_administration/syllabus.html</a>		

<b>Graduate School of Arts and Letters</b>		location	Surugadai Campus
URL	<a href="https://www.meiji.ac.jp/dai_in/arts-letters/index.html">https://www.meiji.ac.jp/dai_in/arts-letters/index.html</a>		
Curriculum	<a href="https://www.meiji.ac.jp/dai_in/arts-letters/curriculum/new_of_curriculum-arts-and-letters.html">https://www.meiji.ac.jp/dai_in/arts-letters/curriculum/new_of_curriculum-arts-and-letters.html</a>		
List of faculty members	<a href="https://www.meiji.ac.jp/dai_in/arts-letters/index.html">https://www.meiji.ac.jp/dai_in/arts-letters/index.html</a>		
Syllabus	<a href="https://oh-o2.meiji.ac.jp/portal/index">https://oh-o2.meiji.ac.jp/portal/index</a> Language : English, Click "Guest Login" and "Search"		

<b>Graduate School of Science and Technology (other than those applying to the International Program in Architecture and Urban Design)</b>		location	Ikuta Campus
URL	<a href="https://www.meiji.ac.jp/sst/grad/index.html">https://www.meiji.ac.jp/sst/grad/index.html</a>		
Curriculum	<a href="https://www.meiji.ac.jp/sst/grad/syllabus/index.html">https://www.meiji.ac.jp/sst/grad/syllabus/index.html</a>		
List of faculty members	<a href="https://www.meiji.ac.jp/sst/grad/index.html">https://www.meiji.ac.jp/sst/grad/index.html</a>		
Syllabus	<a href="https://www.meiji.ac.jp/sst/grad/syllabus/index.html">https://www.meiji.ac.jp/sst/grad/syllabus/index.html</a>		

<b>Graduate School of Agriculture</b>		location	Ikuta Campus
URL	<a href="https://www.meiji.ac.jp/agri/daigakuin/nouken-top.html">https://www.meiji.ac.jp/agri/daigakuin/nouken-top.html</a>		
Curriculum	<a href="https://www.meiji.ac.jp/agri/daigakuin/curriculum-agriculture.html">https://www.meiji.ac.jp/agri/daigakuin/curriculum-agriculture.html</a>		
List of faculty members	<a href="https://www.meiji.ac.jp/agri/daigakuin/nouken-top.html">https://www.meiji.ac.jp/agri/daigakuin/nouken-top.html</a>		
Syllabus	<a href="https://www.meiji.ac.jp/agri/daigakuin/syllabus.html">https://www.meiji.ac.jp/agri/daigakuin/syllabus.html</a> <a href="https://oh-o2.meiji.ac.jp/portal/index">https://oh-o2.meiji.ac.jp/portal/index</a> Language : English, Click "Guest Login" and "Search"		

<b>Graduate School of Information and Communication</b>		location	Surugadai Campus
URL	<a href="https://www.meiji.ac.jp/dai_in/infocom/index.html">https://www.meiji.ac.jp/dai_in/infocom/index.html</a>		
Curriculum	<a href="https://www.meiji.ac.jp/dai_in/infocom/curriculum/curriculum-information-and-communication.html">https://www.meiji.ac.jp/dai_in/infocom/curriculum/curriculum-information-and-communication.html</a>		
List of faculty members	<a href="https://www.meiji.ac.jp/dai_in/infocom/index.html">https://www.meiji.ac.jp/dai_in/infocom/index.html</a>		
Syllabus	<a href="https://www.meiji.ac.jp/dai_in/infocom/syllabus.html">https://www.meiji.ac.jp/dai_in/infocom/syllabus.html</a>		

<b>Graduate School of Humanities</b>		location	Izumi Campus
URL	<a href="https://www.meiji.ac.jp/humanity/index.html">https://www.meiji.ac.jp/humanity/index.html</a>		
Curriculum	<a href="https://www.meiji.ac.jp/humanity/curriculum/curriculum-humanities.html">https://www.meiji.ac.jp/humanity/curriculum/curriculum-humanities.html</a>		
List of faculty members	<a href="https://www.meiji.ac.jp/humanity/index.html">https://www.meiji.ac.jp/humanity/index.html</a>		
Syllabus	<a href="https://www.meiji.ac.jp/humanity/syllabus.html">https://www.meiji.ac.jp/humanity/syllabus.html</a>		

Graduate Schools which Offer Classes in Japanese

<b>Graduate School of Advanced Mathematical Sciences</b>		location	Nakano Campus
URL	<a href="https://www.meiji.ac.jp/ams/index.html">https://www.meiji.ac.jp/ams/index.html</a>		
Curriculum	<a href="https://www.meiji.ac.jp/ams/curriculum/model.html">https://www.meiji.ac.jp/ams/curriculum/model.html</a>		
List of faculty members	<a href="https://www.meiji.ac.jp/ams/professor/01/index.html">https://www.meiji.ac.jp/ams/professor/01/index.html</a>		
Syllabus	<a href="https://www.meiji.ac.jp/ams/syllabus.html">https://www.meiji.ac.jp/ams/syllabus.html</a>		

<b>Graduate School of Global Japanese Studies</b>		location	Nakano Campus
URL	<a href="https://www.meiji.ac.jp/ggis/index.html">https://www.meiji.ac.jp/ggis/index.html</a>		
Curriculum	<a href="https://www.meiji.ac.jp/ggis/model.html">https://www.meiji.ac.jp/ggis/model.html</a>		
List of faculty members	<a href="https://www.meiji.ac.jp/ggis/index.html">https://www.meiji.ac.jp/ggis/index.html</a>		
Syllabus	<a href="https://www.meiji.ac.jp/ggis/syllabus.html">https://www.meiji.ac.jp/ggis/syllabus.html</a>		

<b>Graduate School of Global Business</b>		location	Surugadai Campus
URL	<a href="https://www.meiji.ac.jp/cip/english/graduate/global/index.html">https://www.meiji.ac.jp/cip/english/graduate/global/index.html</a>		
Curriculum	<a href="https://www.meiji.ac.jp/mbs/curriculum/timetable.html">https://www.meiji.ac.jp/mbs/curriculum/timetable.html</a>		
List of faculty members	<a href="https://www.meiji.ac.jp/mbs/faculty/faculty-list.html">https://www.meiji.ac.jp/mbs/faculty/faculty-list.html</a>		
Syllabus	<a href="https://www.meiji.ac.jp/mbs/curriculum/timetable.html">https://www.meiji.ac.jp/mbs/curriculum/timetable.html</a> <Notes> ●Classes are held from 6:55 pm to 10:00 pm on weekdays and from 9:00am on Saturday. Please make sure time table and course availability.		
Time table	<a href="https://www.meiji.ac.jp/mbs/curriculum/timetable.html">https://www.meiji.ac.jp/mbs/curriculum/timetable.html</a> <Notes> ●Academic calendar is different from other schools. Please check the period of semester.		



**Undergraduate Schools which Offer Classes in English**

School of Global Japanese Studies (English Track)		location	Nakano Campus
URL	<a href="https://www.meiji.ac.jp/cip/english/englishtrack/index.html">https://www.meiji.ac.jp/cip/english/englishtrack/index.html</a>		
Curriculum	<p><a href="https://www.meiji.ac.jp/cip/english/englishtrack/englishtrack_curriculum_chart.html">https://www.meiji.ac.jp/cip/english/englishtrack/englishtrack_curriculum_chart.html</a></p> <p>&lt;Notes&gt;</p> <ul style="list-style-type: none"> <li>● <b>The classes on the curriculum chart with " * " are offered in Japanese only.</b></li> <li>● <b>The subjects marked with "○" in the curriculum chart are required courses of regular students of Meiji University. Exchange students can not take the required courses for regular students except Japanese-language courses.</b></li> </ul> <p>● The School of Global Japanese Studies (SGJS) only offers Japanese-language classes for English Track Students and Exchange students in SGJS. The class level is decided according to the placement test held by SGJS, and cannot be decided before arrival.</p> <p>&lt; Introductory Level (Introductory)&gt;</p> <p style="padding-left: 20px;">Introductory Japanese (General), Introductory Japanese (Vocabulary &amp; Kanji)</p> <p>&lt; Elementary Level (equivalent to JLPT N5 level)&gt;</p> <p style="padding-left: 20px;">Elementary Japanese (General), Elementary Japanese (Vocabulary &amp; Kanji)</p> <p>&lt; Pre-intermediate Level (equivalent to JLPT N4 level)&gt;</p> <p style="padding-left: 20px;">Pre-intermediate Japanese (General), Pre-intermediate Japanese (Vocabulary &amp; Kanji)</p> <p>&lt; Intermediate Level (equivalent to JLPT N3 level)&gt;</p> <p style="padding-left: 20px;">Intermediate Japanese (General), Intermediate Japanese (Vocabulary &amp; Kanji)</p> <p>&lt; Upper-intermediate Level (equivalent to first half of JLPT N2 level)&gt;</p> <p style="padding-left: 20px;">Upper-intermediate Japanese (General), Upper-intermediate Japanese (Vocabulary &amp; Kanji) JLPT Preparation (Intermediate)</p> <p>&lt; Pre-advanced Japanese Level (equivalent to JLPT N2 level)&gt;</p> <p style="padding-left: 20px;">Pre-advanced Japanese (General), Pre-advanced Japanese (Vocabulary &amp; Kanji) JLPT Preparation (Advanced)</p> <p>&lt; Advanced Level (JLPT N1 level)&gt;</p> <p style="padding-left: 20px;">Advanced Japanese (Reading) I / II , Advanced Japanese (Listening) I / II , Advanced Japanese (Writing) I / II , Advanced Japanese (Speaking) I / II</p> <p>&lt; Upper-advanced Level (JLPT N1 level)&gt;</p> <p style="padding-left: 20px;">Japanese Expression (Writing), Japanese Expression (Speaking).</p> <p>*Japanese Language Programs for International Students offered in Surugadai campus are not available for students in the School of Global Japanese Studies.</p>		
List of faculty members	<a href="https://www.meiji.ac.jp/cip/english/undergraduate/nippon/faculty.html">https://www.meiji.ac.jp/cip/english/undergraduate/nippon/faculty.html</a>		
Syllabus	<p><a href="https://www.meiji.ac.jp/nippon/office-info/6t5h7p00000e66ny.html">https://www.meiji.ac.jp/nippon/office-info/6t5h7p00000e66ny.html</a></p> <p>●The classes in syllabus are not all offered for the Exchange students. The syllabus includes classes offered in Japanese only.</p> <p>&lt;How to search&gt;</p> <p><a href="https://oh-o2.meiji.ac.jp/portal/index">https://oh-o2.meiji.ac.jp/portal/index</a></p> <p>Language : English, Click "Guest Login"</p> <p>Oh-o! Meiji / Search /</p> <p>Department: School of Global Japanese Studies      Academic Year : 2023 Academic Year</p> <p>Term: Spring Semester and Fall Semester              Language: English</p>		

<b>School of Political Science and Economics</b> <b>(only taking classes conducted in English)</b>		locations	Surugadai Campus and Izumi Campus
URL	<a href="https://www.meiji.ac.jp/cip/english/undergraduate/economics/index.html">https://www.meiji.ac.jp/cip/english/undergraduate/economics/index.html</a>		
Curriculum	<a href="https://www.meiji.ac.jp/cip/english/undergraduate/economics/chart.html">https://www.meiji.ac.jp/cip/english/undergraduate/economics/chart.html</a>		
List of faculty members	<a href="https://www.meiji.ac.jp/cip/english/undergraduate/economics/faculty.html">https://www.meiji.ac.jp/cip/english/undergraduate/economics/faculty.html</a>		
Syllabus	<a href="https://www.meiji.ac.jp/seikei/student/6t5h7p00000ejc6i-att/6t5h7p00000ejc8t.pdf">https://www.meiji.ac.jp/seikei/student/6t5h7p00000ejc6i-att/6t5h7p00000ejc8t.pdf</a> <a href="https://oh-o2.meiji.ac.jp/portal/index">https://oh-o2.meiji.ac.jp/portal/index</a> Language : English, Click "Guest Login" <How to search> Oh-o! Meiji / Search / Department: School of Political Science and Economics Academic Year : 2023 Academic Year Term: Spring Semester and Fall Semester Language: English		

<b>School of Arts and Letters</b> <b>(only taking classes conducted in English and</b> <b>Japanese Language Classes)</b>		locations	Surugadai Campus and Izumi Campus
URL	<a href="https://www.meiji.ac.jp/cip/english/undergraduate/letters/index.html">https://www.meiji.ac.jp/cip/english/undergraduate/letters/index.html</a>		
Curriculum	For the classes taught in English at our School, please refer to following link; <a href="https://www.meiji.ac.jp/cip/english/undergraduate/letters/exchange_student.html">https://www.meiji.ac.jp/cip/english/undergraduate/letters/exchange_student.html</a>		
List of faculty members	<a href="https://www.meiji.ac.jp/cip/english/undergraduate/letters/faculty.html">https://www.meiji.ac.jp/cip/english/undergraduate/letters/faculty.html</a>		
Syllabus	<a href="https://www.meiji.ac.jp/bungaku/6t5h7p000000qa9i-att/6t5h7p00000h7vb5.pdf">https://www.meiji.ac.jp/bungaku/6t5h7p000000qa9i-att/6t5h7p00000h7vb5.pdf</a>		

<b>School of Business Administration</b> <b>(only taking classes conducted in English)</b>		locations	Surugadai Campus and Izumi Campus
URL	<a href="https://www.meiji.ac.jp/cip/english/undergraduate/business/index.html">https://www.meiji.ac.jp/cip/english/undergraduate/business/index.html</a>		
Curriculum	<a href="https://www.meiji.ac.jp/cip/english/undergraduate/business/chart.html">https://www.meiji.ac.jp/cip/english/undergraduate/business/chart.html</a>		
List of faculty members	<a href="https://www.meiji.ac.jp/cip/english/undergraduate/business/faculty.html">https://www.meiji.ac.jp/cip/english/undergraduate/business/faculty.html</a>		
Syllabus	<a href="https://www.meiji.ac.jp/cip/english/undergraduate/business/t4q24j00000068i1-att/t4q24j00000068jv.pdf">https://www.meiji.ac.jp/cip/english/undergraduate/business/t4q24j00000068i1-att/t4q24j00000068jv.pdf</a>		

**Graduate Schools which Offer Classes in English**

<b>Graduate School of Governance Studies (English Track)</b>		location	Surugadai Campus
URL	<a href="https://www.meiji.ac.jp/cip/english/graduate/governance/index.html">https://www.meiji.ac.jp/cip/english/graduate/governance/index.html</a>		
Curriculum	<a href="https://www.meiji.ac.jp/cip/english/graduate/governance/curriculum.html">https://www.meiji.ac.jp/cip/english/graduate/governance/curriculum.html</a> Exchange students must take a course called “research methods” taught by the supervisor the graduate school assigns to them. They must also take at least one class taught by that supervisor.		
List of faculty members	<a href="https://www.meiji.ac.jp/cip/english/graduate/governance/faculty.html">https://www.meiji.ac.jp/cip/english/graduate/governance/faculty.html</a> Cross-appointed Professor cannot be chosen as the preferred supervisors in the online application.		
Syllabus	<a href="https://www.meiji.ac.jp/cip/english/graduate/governance/timetable-syllabus.html">https://www.meiji.ac.jp/cip/english/graduate/governance/timetable-syllabus.html</a>		
Time table	<a href="https://www.meiji.ac.jp/mugs2/curriculum/timetable.html">https://www.meiji.ac.jp/mugs2/curriculum/timetable.html</a>		

<b>Graduate School of Science and Technology, International Program in Architecture and Urban Design</b>		location	Nakano Campus
URL	<a href="https://iaud.jp/">https://iaud.jp/</a>		
Curriculum	<a href="https://iaud.jp/about/">https://iaud.jp/about/</a>		
List of faculty members	<a href="https://iaud.jp/people/">https://iaud.jp/people/</a>		
Syllabus	<a href="https://www.meiji.ac.jp/sst/grad/6t5h7p00000ggbt9-att/6t5h7p00000nc7bo.pdf">https://www.meiji.ac.jp/sst/grad/6t5h7p00000ggbt9-att/6t5h7p00000nc7bo.pdf</a>		

<b>Graduate School of Business Administration</b>		location	Surugadai Campus
URL	<a href="https://www.meiji.ac.jp/dai_in/business_administration/index.html">https://www.meiji.ac.jp/dai_in/business_administration/index.html</a>		
Curriculum	<a href="https://www.meiji.ac.jp/dai_in/business_administration/curriculum/curriculum-business-administration.html">https://www.meiji.ac.jp/dai_in/business_administration/curriculum/curriculum-business-administration.html</a>		
List of faculty members	<a href="https://www.meiji.ac.jp/dai_in/business_administration/index.html">https://www.meiji.ac.jp/dai_in/business_administration/index.html</a>		
Syllabus	<a href="https://www.meiji.ac.jp/dai_in/business_administration/syllabus.html">https://www.meiji.ac.jp/dai_in/business_administration/syllabus.html</a>		

<b>Graduate School of Global Business</b>		location	Surugadai Campus
URL	<a href="https://www.meiji.ac.jp/cip/english/graduate/global/index.html">https://www.meiji.ac.jp/cip/english/graduate/global/index.html</a>		
Curriculum	<a href="https://www.meiji.ac.jp/cip/english/graduate/global/chart.html">https://www.meiji.ac.jp/cip/english/graduate/global/chart.html</a>		
List of faculty members	<a href="https://www.meiji.ac.jp/cip/english/graduate/global/faculty.html">https://www.meiji.ac.jp/cip/english/graduate/global/faculty.html</a> Cross-appointed Professor and Concurrently Appointed Lecturer cannot be chosen as the preferred supervisors in the online application.		
Syllabus/Time table	<a href="https://www.meiji.ac.jp/cip/english/graduate/global/timetable_syllabus.html">https://www.meiji.ac.jp/cip/english/graduate/global/timetable_syllabus.html</a>		

<b>Graduate School of Global Governance</b>		location	Surugadai Campus
URL	<a href="https://www.meiji.ac.jp/cip/english/graduate/gsgg/index.html">https://www.meiji.ac.jp/cip/english/graduate/gsgg/index.html</a>		
Curriculum	<a href="https://www.meiji.ac.jp/cip/english/graduate/gsgg/chart.html">https://www.meiji.ac.jp/cip/english/graduate/gsgg/chart.html</a>		
List of faculty members	<a href="https://www.meiji.ac.jp/cip/english/graduate/gsgg/faculty.html">https://www.meiji.ac.jp/cip/english/graduate/gsgg/faculty.html</a>		
Syllabus/Time table	<a href="https://www.meiji.ac.jp/dai_in/gsgg/6t5h7p00000gqcpo-att/6t5h7p00000gqcum.pdf">https://www.meiji.ac.jp/dai_in/gsgg/6t5h7p00000gqcpo-att/6t5h7p00000gqcum.pdf</a>		